



7 Oundle Close, Scunthorpe, DN16 3QR

£189,950

Perfect semi detached bungalow both in terms of location and presentation. In the middle of Bottesford and close to amenities and local schools, and the owners have upgraded this over the last few years and it's a very well presented home. Sat on a south facing tucked away in a quiet corner this bungalow is an ideal downsizer.

You have a central hall with doors to the lounge diner, both bedrooms, bathroom, w.c. and kitchen leads to the conservatory overlooking the private south facing garden. At the front you also have a lovely garden with the drive for two cars with a detached garage. It's neutrally decorated and all the major jobs have been taken care of.

Viewings are by appointment, please contact us to book.

Entrance



Conservatory 14'8" x 7'11" (4.48 x 2.43)



Bathroom



Lounge diner 20'2" x 11'9" (6.15 x 3.60)



Kitchen 11'11" x 8'2" (3.64 x 2.50)



Bedroom one 12'0" x 10'5" (3.67 x 3.20)



Bedroom two 10'7" x 9'2" (3.23 x 2.80)



W.C.

Garage 17'0" x 9'8" (5.19 x 2.95)



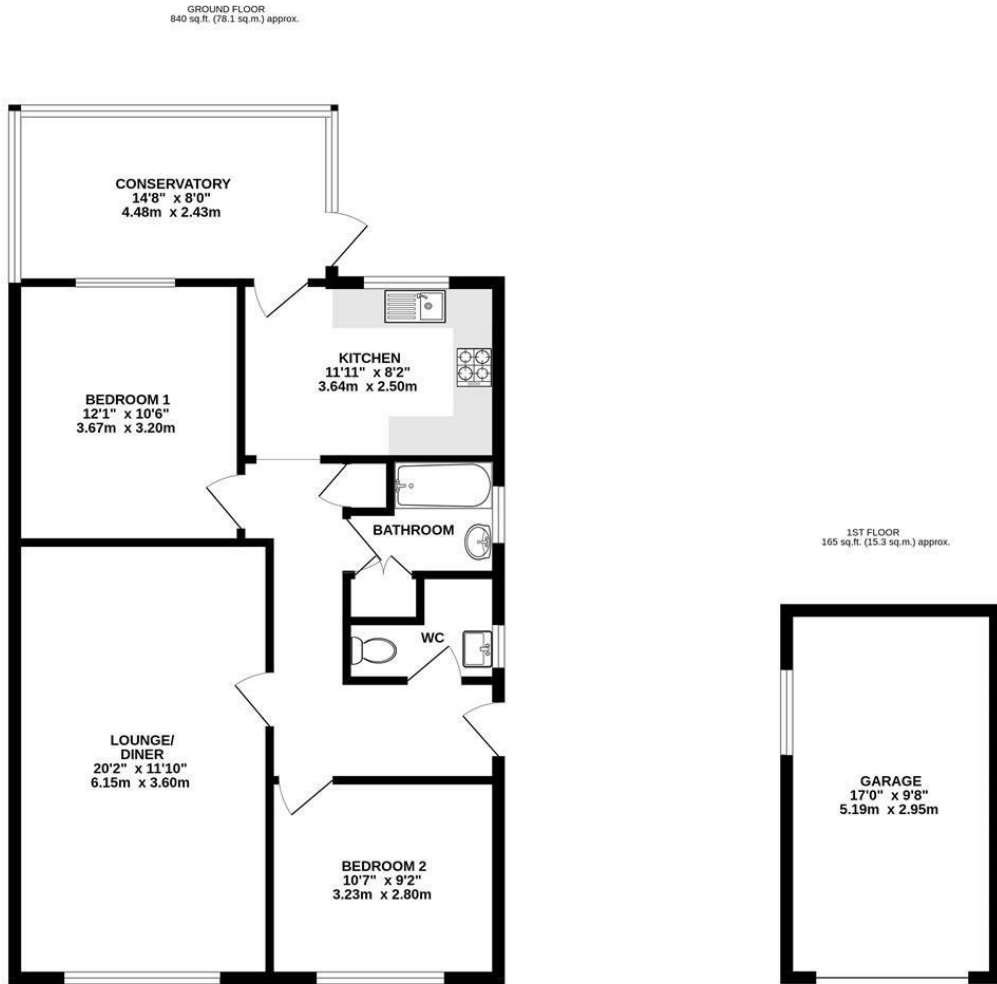
Outside front



Outside rear



Floor Plan



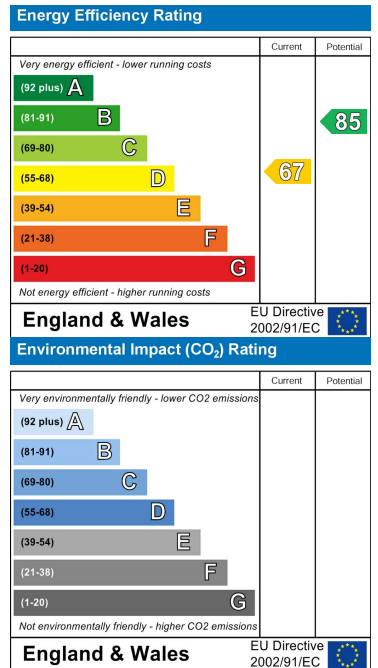
TOTAL FLOOR AREA: 1005 sq.ft. (93.4 sq.m.) approx.
Whilst every attempt has been made to ensure the accuracy of the floorplan contained here, measurements of doors, windows, rooms and any other items are approximate and no responsibility is taken for any error, omission or mis-statement. This plan is for illustrative purposes only and should be used as such by any prospective purchaser. The services, systems and appliances shown have not been tested and no guarantee as to their operability or efficiency can be given.
Made with Metropix ©2020



Area Map



Energy Efficiency Graph



These particulars, whilst believed to be accurate are set out as a general outline only for guidance and do not constitute any part of an offer or contract. Intending purchasers should not rely on them as statements of representation of fact, but must satisfy themselves by inspection or otherwise as to their accuracy. No person in this firm's employment has the authority to make or give any representation or warranty in respect of the property.